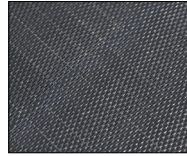
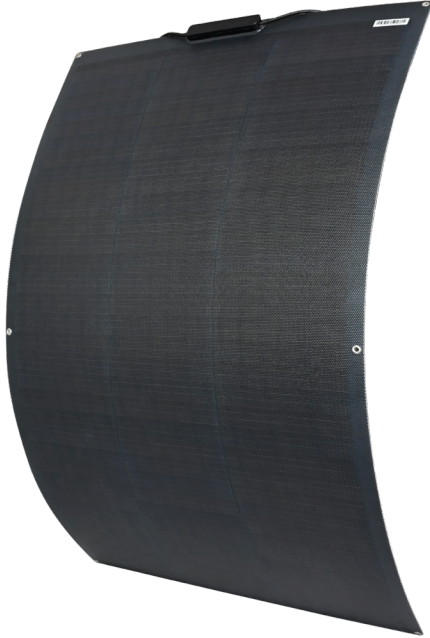


Product Details

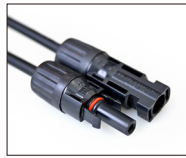
FLEXIBLE SOLAR PANEL SG-TF-D-150W



Anti-Slip Surface

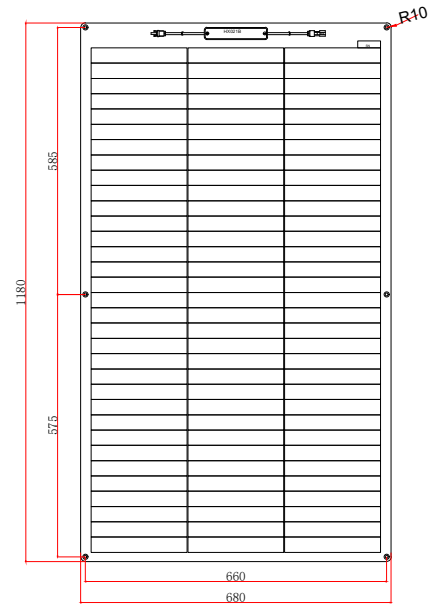


Junction Box

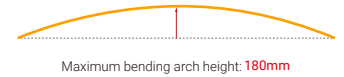
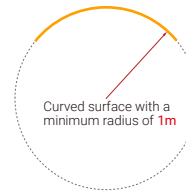


MC4

Module Diagram



Solar panel bending diagram



Solar panel

Electrical Characteristics

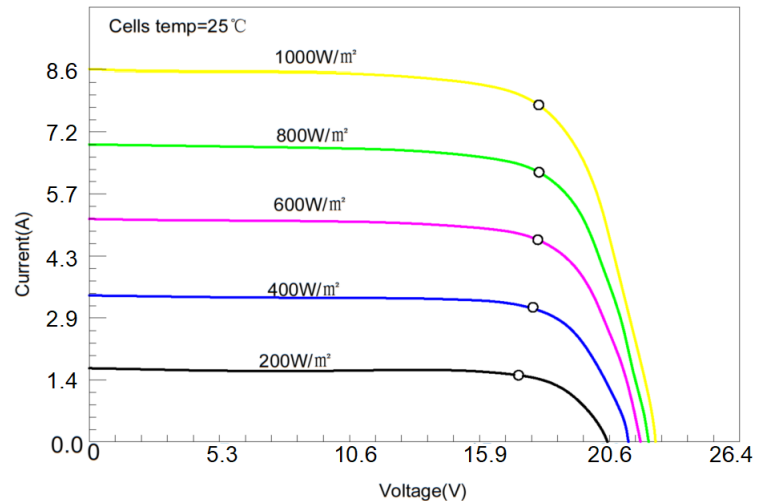
Maximum power(Pmax)	150W
Open-circuit voltage(Voc)	22.2V
Voltage at Pmax(Vmp)	18.8V
Short-circuit current(Isc)	8.46A
Current at Pmax(Imp)	7.98A
Cells Efficiency(%)	22.0%
The maximum system voltage	600V DC(IEC)
Power temperature coefficient	-0.38%/°C
Voltage temperature coefficient	-0.36%/°C
Current temperature coefficient	0.07%/°C
Output power tolerance	±3%
Operating Temperature	-40°C+85°C

Specifications

Solar cell brand	210 mono solar cells
No.of cells and connections	99(3*33)
Module dimension	1180*680*2mm
Weight	2.44kg
Output cable	JB (2*bypass diodes) + 900mm/4mm² cable+MC4 compatible
Waterproof	IP67
Certifications	CE, ROHS
Maximum bending arch height	180mm
Warranty	5 years and service life 20 years

Product Introduction

TF series photovoltaic panel adopts proven crystalline silicon solar cell technology and polymer composite material to achieve a new type of pv module that is glass-free, lightweight and thin sheet. The solar cells use PERC Shingle-cell technology to achieve zero cell spacing, which effectively increases the light-receiving area of the module.



*SUNGOLD offer customize service, please refer to our website or ask SUNGOLD workers for more sizes and the latest parameters.