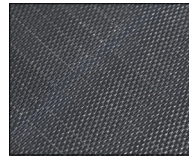
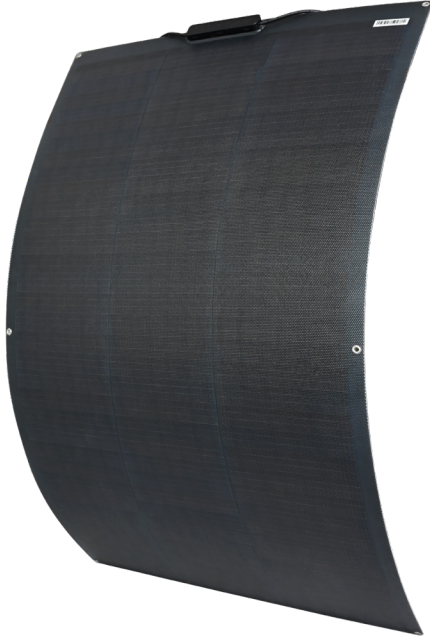


Product Details

FLEXIBLE SOLAR PANEL

SG-TF-D-50W

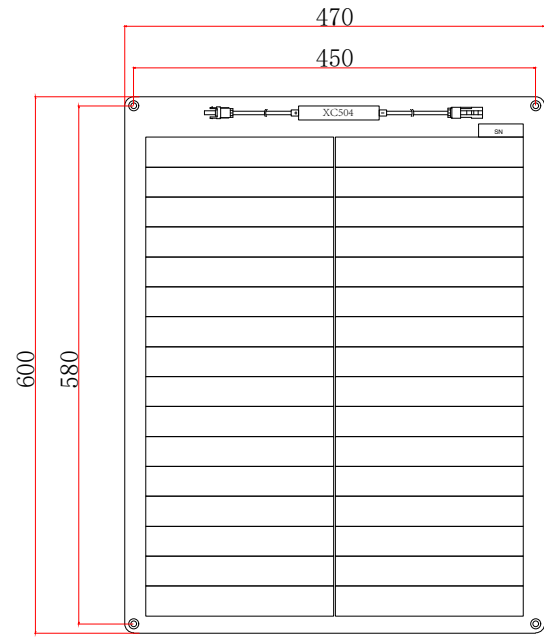


Anti-Slip Surface

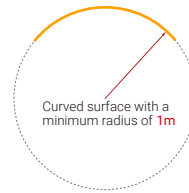


MC4

Module Diagram



Solar panel bending diagram



Curved surface with a minimum radius of 1m



Maximum bending arch height: 45mm

— : Solar panel

Electrical Characteristics

Maximum power(Pmax)	50W
Open-circuit voltage(Voc)	21.5V
Voltage at Pmax(Vmp)	18.2V
Short-circuit current(Isc)	2.91A
Current at Pmax(Imp)	2.75A
Cells Efficiency(%)	22.0%
The maximum system voltage	600V DC(IEC)
Power temperature coefficient	-0.38%/°C
Voltage temperature coefficient	-0.36%/°C
Current temperature coefficient	0.07%/°C
Output power tolerance	±3%
Operating Temperature	-40°C+85°C

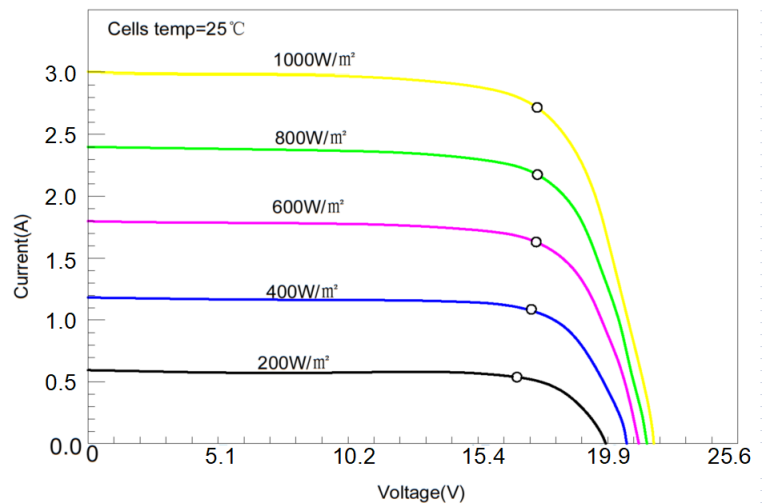
Specifications

Solar cell brand	210 mono solar cells
No.of cells and connections	32(2*16)
Module dimension	600*470*2mm
Weight	0.96kg
Output cable	JB (2*bypass diodes) + 900mm/4mm ² cable+MC4 compatible
Waterproof	IP67
Certifications	CE, ROHS
Maximum bending arch height	45mm
Warranty	5 years and service life 20 years

Product Introduction

TF series photovoltaic panel adopts proven crystalline silicon solar cell technology and polymer composite material to achieve a new type of pv module that is glass-free, lightweight and thin sheet.

The solar cells use PERC Shingle-cell technology to achieve zero cell spacing, which effectively increases the light-receiving area of the module.



*SUNGOLD offer customize service, please refer to our website or ask SUNGOLD workers for more sizes and the latest parameters.